

Portland International Airport Terminal Core Redevelopment (TCORE)

TCORE OPEN HOUSE

When: August 19th, 9 – 11 a.m.

Where: 7422 NE Airport Way, Portland 97218

Please come join us to meet the Hoffman Skanska Project Managers and our Trade Partners. Our Project Managers will talk about the opportunities we have in Design Package F.3 that goes out to bid August 18th. Our trade partners will be there to talk with you about possible opportunities in current packages. Together, lets find the right opportunity for you here at TCORE.

Trade Partners

Curtainwall, Earthwork, HVAC, Mechanical, Electrical, Fire Suppression

Design Package F.3

Concessions framing
Painting
Floor finishes
Decorative metals
Interior metal panels
Solid surface materials

Interior glazing & handrails
Doors, frames & hardware
Steel stairs & railings
Miscellaneous specialties
Interior landscaping

Small Business Outreach

Karen Egner (She/Her)

Karen.Egner@hoffmanskanskajv.com

971-313-4442

Bid Documents

Rebekah Kilgore

Rebekah-Kilgore@hoffmancorp.com

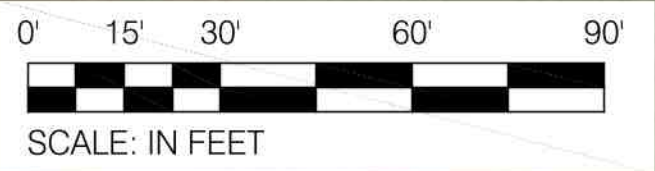
503-221-8917

Prequalification

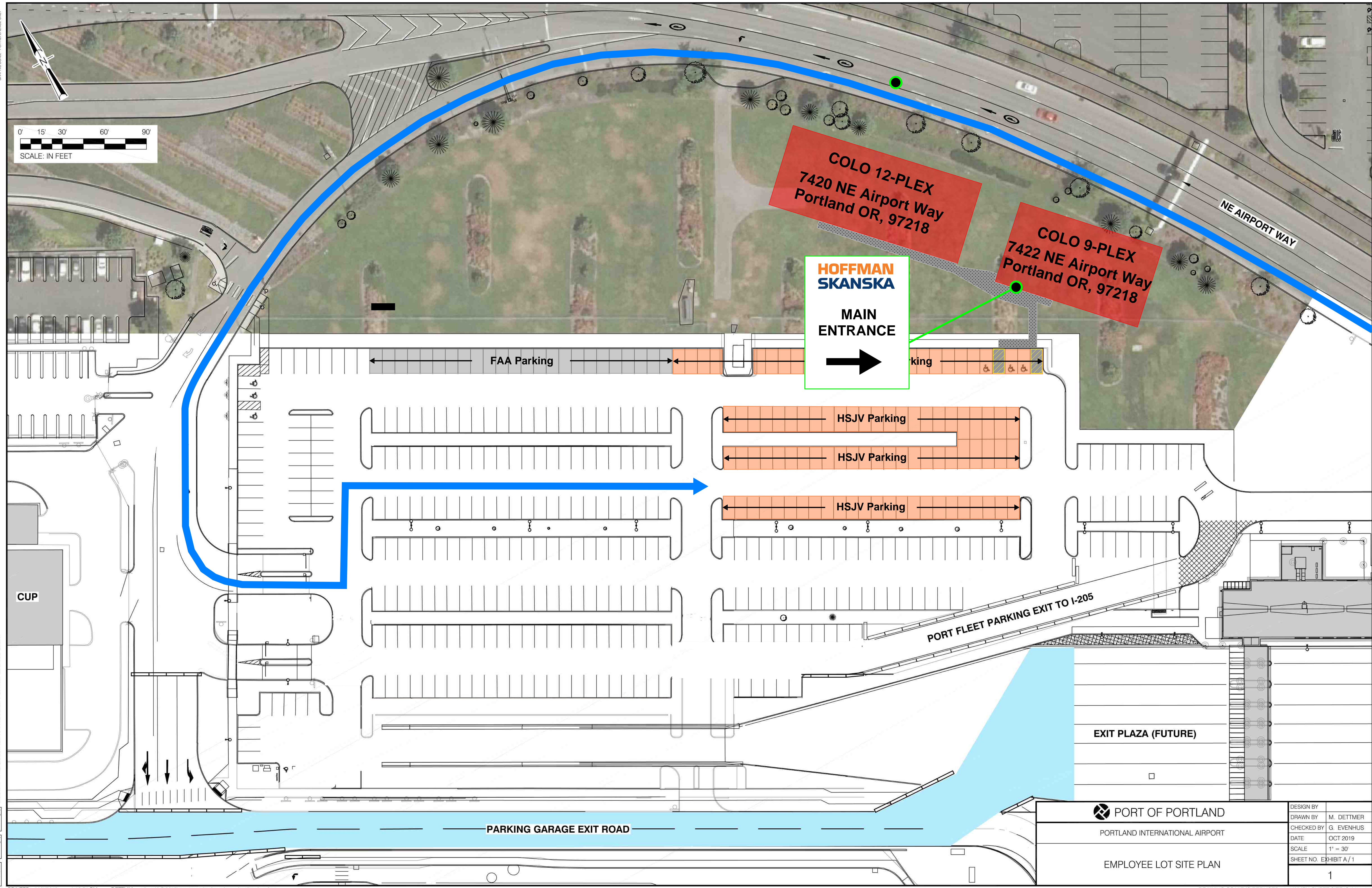
<https://www.usa.Skanska.com/who-we-are/contact-us/Skanska-offices/Portland-OR/Portland-subcontractor-portal>



0' 15' 30' 60' 90'
SCALE: IN FEET



CAN YOU SEE THE AIRPLANES? THE ADJACENT SAMPLES SHOW THREE DIFFERENT LEVELS OF SHADING. SETTINGS FOR VIEWING AND PRINTING DRAWING CONTENT ARE OPTIMIZED WHEN ALL THREE PLANES ARE VISIBLE. THIS GUIDANCE IS PROVIDED FOR REFERENCE ONLY.



COLO 12-PLEX
7420 NE Airport Way
Portland OR, 97218

COLO 9-PLEX
7422 NE Airport Way
Portland OR, 97218

**HOFFMAN
SKANSKA**

MAIN
ENTRANCE
→

FAA Parking

HSJV Parking

HSJV Parking

HSJV Parking

PORT FLEET PARKING EXIT TO I-205

EXIT PLAZA (FUTURE)

PARKING GARAGE EXIT ROAD

PORT OF PORTLAND

PORTLAND INTERNATIONAL AIRPORT

EMPLOYEE LOT SITE PLAN

DESIGN BY

DRAWN BY M. DETTMER

CHECKED BY G. EVENHUS

DATE OCT 2019

SCALE 1" = 30'

SHEET NO. EXHIBIT A / 1

1